

**THE  
CIRCUIT  
TRAILS**  
100s OF MILES  
OF HAPPY

# Northwest Trails Open House

An exploration of upcoming projects that will enrich the Circuit Trails within NW Philadelphia and Lower Merion Township

**project spotlight:**

## Montgomery County Wissahickon & Cross County Trails

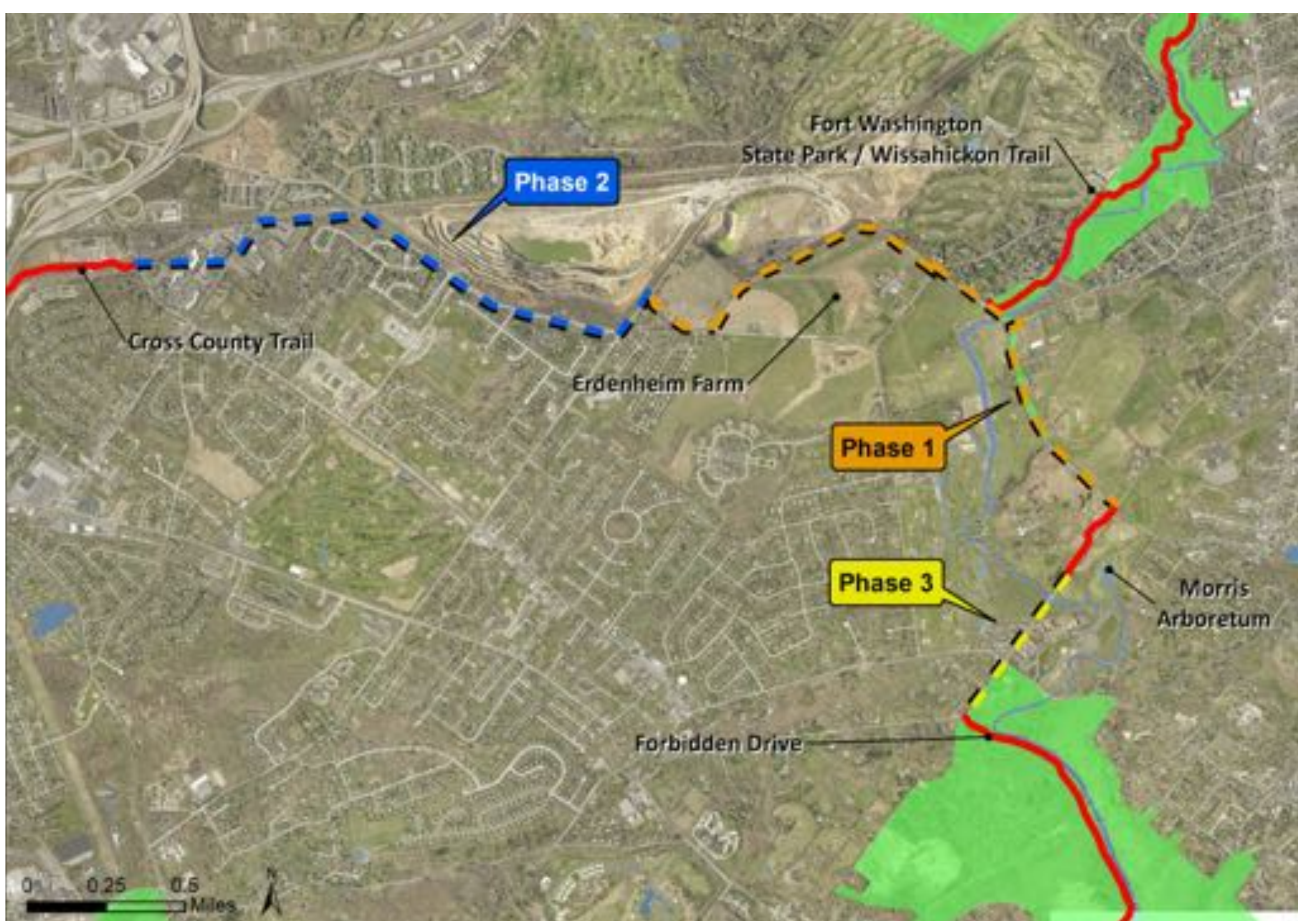


### PARTNERS:

- Pennsylvania Department of Conservation & Natural Resources
- Whitemarsh Foundation
- Erdenheim Farm
- Springfield & Whitemarsh Townships
- Morris Arboretum
- Urban Engineers
- Friends of the Wissahickon

### KEY FEATURES:

- Connects Forbidden Drive to Morris Arboretum, Erdenheim Farm, Fort Washington State Park, the Wissahickon Trail, and the Cross County Trail.
- Creates loop off of the Schuylkill River Trail that allows trail users to access multiple amenities.
- 10-12' wide, ADA-compliant trail will be a combination of asphalt and compacted gravel designed for multiple uses.
- Takes trail users through a scenic pastoral landscape just outside of Philadelphia.



**Phase 1: Construction: 2019-2020**

**Phase 2: Design: 2019-2020, Construction: TBD**

**Phase 3: Design: 2019-2020, Construction: TBD**

<https://www.montcopa.org/921/Cross-County-Trail>

<https://www.montcopa.org/924/Wissahickon-Trail>